



# LITESPHERE DROP2.0

## Litesphere Drop 2.0 String Light- How it works

A simple 3 step order process for cord spacing, drop length with light engine and globe choice for endless design combinations, and power lead length to create a unique experience for personal or public space.

### CONNECTION

IP65 Outdoor 2 pin twist connector for solid, reliable performance.

### DROP

Tivoli's New DROP system gives you standard 6 length options and a custom offering for additional lengths.

### SHADE ADAPTER - optional

Tivoli's Patent Pending universal shade adapter allows you to mix and match any shade with our line of String Light.

### LIGHT SHADE - optional

Multiple light shades to choose from to add form and function to your design. Dark Sky compliance.

### LIGHT ENGINE

Up to 90 lumens each and 3 light intensities to choose from. Available in Standard, High Output and Very High Output. Tivoli's VHO wedge based LED is 23 times brighter than our standard output offering. Built with Nichia SMD LEDs and a thermal plastic base for optimal heat dissipation

### GLOBES

9 globe options to finish your design and achieve a personal look.

1

Choose Your Cord

2

Choose Your Drop Length,  
LED Color & Globe

3

Choose Your Power Lead Length

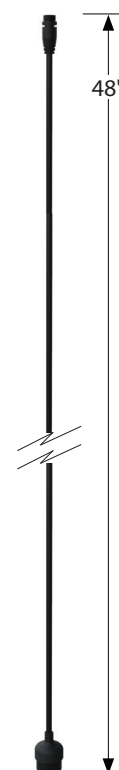
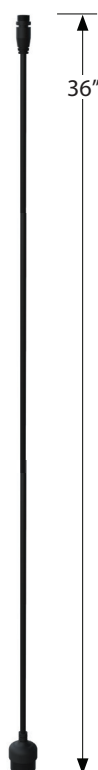
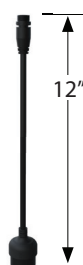




Project: \_\_\_\_\_ TYPE: \_\_\_\_\_

- Robust specification-grade strand with factory molded spacing for consistent quality from start to finish
- Available DarkSky option with added light shade
- 12V DC Low voltage system for long runs
- PET shatter proof globe
- IP65
- cULus
- 3 Year warranty

## Dimensions



## 1 - Strand Order Guide

PRODUCT CODE	PROFILE	STRAND COLOR	SPACING
<b>LSD2</b>	<b>STRND</b>		
<b>LSD2</b> = Litesphere DROP 2.0	<b>STRND</b> = Strand	<b>BK</b> = Black <b>WH</b> = White*	<b>24</b> = 24" OC <b>36</b> = 36" OC <b>48</b> = 48" OC

\*Contact Factory for MOQ and lead time

## 2 - Drop Order Guide

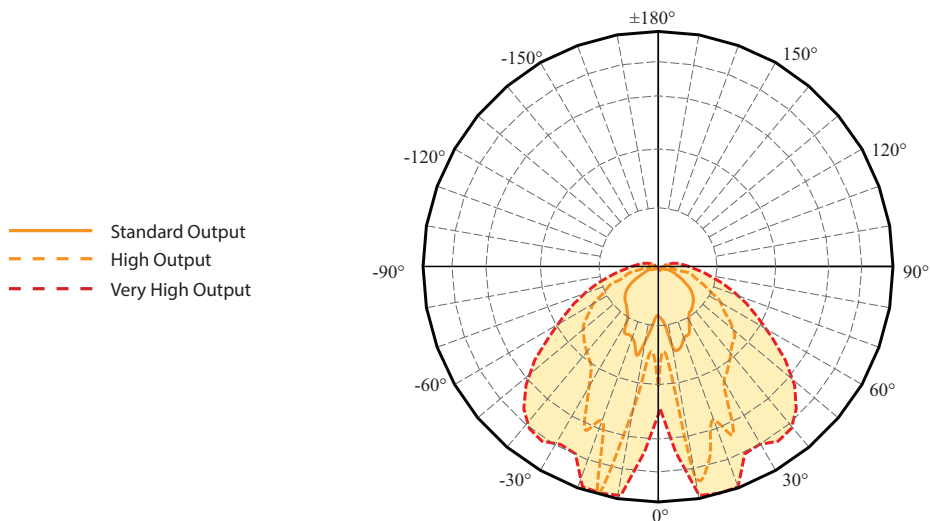
Note: All DROPS are pre-built with choice of LED chip and globe, ready to install.

PRODUCT CODE	PROFILE	DROP COLOR	LED TYPE	CCT COLOR	GLOBE	DROP LENGTH
<b>LSD2</b>	<b>DRP</b>					
<b>LSD2</b> = Litesphere Drop 2.0	<b>DRP</b> = Drop	<b>BK</b> = Black <b>WH</b> = White*	<b>S</b> = Standard Output <b>H</b> = High Output <b>V</b> = Very High Output	<b>19</b> = 1900K <b>27</b> = 2700K <b>30</b> = 3000K <b>35</b> = 3500K <b>40</b> = 4000K <b>50</b> = 5000K* <b>AM</b> = Amber* <b>RD</b> = Red* <b>GN</b> = Green* <b>YL</b> = Yellow* <b>RB</b> = Royal Blue* <b>TS</b> = Turtle Safe**	<b>C</b> = Clear <b>F</b> = Frosted <b>O</b> = Opal <b>Y</b> = Yellow <b>R</b> = Red <b>N</b> = Orange <b>G</b> = Green <b>B</b> = Blue <b>P</b> = Purple <b>Z</b> = Varied Color	<b>6</b> = 6" <b>12</b> = 12" <b>24</b> = 24" <b>36</b> = 36" <b>48</b> = 48" <b>60</b> = 60"

\*Contact Factory for MOQ and lead time

\*\* Available in VHO LED only

## Photometrics



### 3 - Power Lead Order Guide

#### LSL2-XEP-X-XX

X = B (black), W\* (white)

XX = 05 (5'), 10 (10'), 15 (15'), 20 (20'), 25 (25')

For custom length consult factory

Figure A - All Litesphere DROP 2.0 are evenly cut between globes according to specified spacing.

Figure B - Power leads are added to the end cut, extending the total length of the power lead.

Figure A

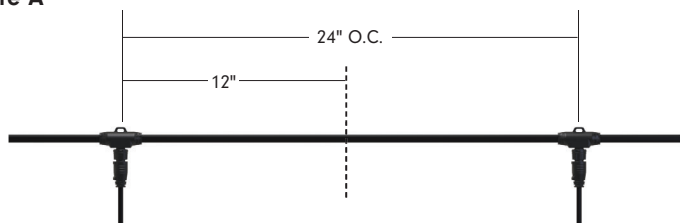
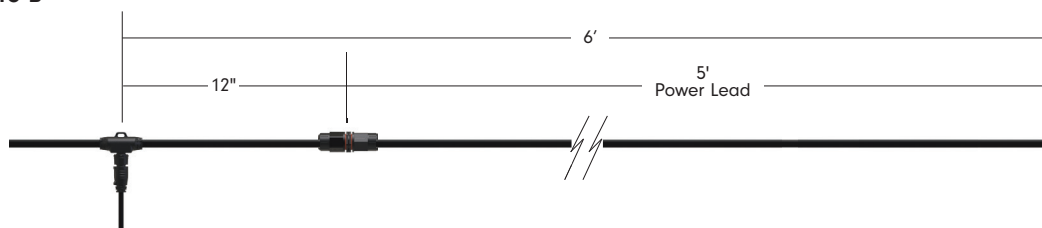


Figure B



\*Contact Factory for MOQ and lead time

### Jumper Order Guide (Optional)

#### LSL2-JUMPER-X-XX

X = B (black), W\* (white)

XX = 05 (5'), 10 (10')

For custom length, consult factory

Figure A - All Litesphere DROP 2.0 are evenly cut between globes according to specified spacing.

Figure B - Jumpers are added between the cuts, extending the total length of wire between globes.

Figure A

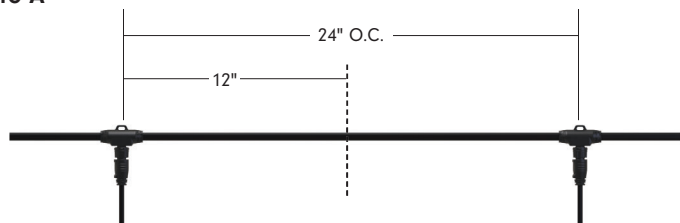
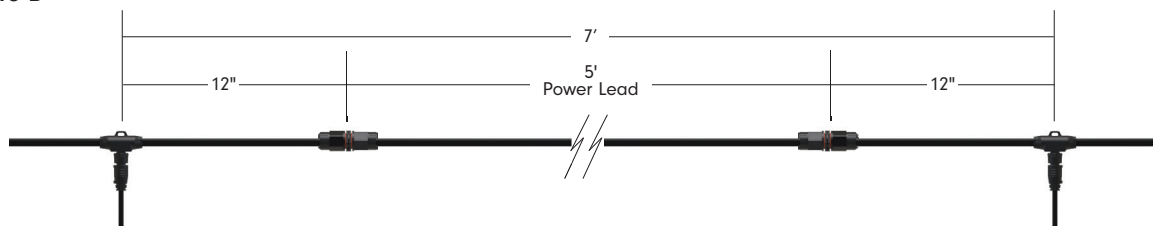


Figure B



\*Contact Factory for MOQ and lead time

Tivoli, LLC. reserves the right to modify this specification without prior notice.

## Specification

### Output - Standard Output

OC Spacing	24"	36"	48"
Lumens/ft	3	2	1.5
Watt/ft	0.04	0.03	0.02
Maximum Run Length	200'	250'	300'

### Output - Very High Output

OC Spacing	24"	36"	48"
Lumens/ft	45	30	22.5
Watt/ft	0.48	0.32	0.24
Maximum Run Length	50'	100'	120'

### Output - High Output

OC Spacing	24"	36"	48"
Lumens/ft	7	5	3.5
Watt/ft	0.12	0.077	0.06
Maximum Run Length	130'	150'	200'

### Drop

Length	6'	12"	24"	36"	48"	60"
Weights/unit	CF	0.15	0.19	0.22	CF	CF

### Strand

OC Spacing	24"	36"	48"
Weights/ft (Strand and Catenary Cable Only)	0.12	0.114	0.11

### Electrical

Input Voltage	12V DC
Power Supply	Class 2

### Control

Control System	0-10V, ELV, MLV, DMX 512 (Dim to 1% with an Infinity power supply and a 0-10V Lutron Diva dimmer)
----------------	---------------------------------------------------------------------------------------------------

### Physical

Socket Housing	PVC
American Wire Gauge	14 AWG
Globe	PET
Mounting	Surface Mount, Suspended
Operating Temperature	-40°C to 65°C (-40°F to 149°F)
Storage Temperature	-40°C to 65°C (-40°F to 149°F)

### Certification and Testing

Certification	cULus Listed
Lumen Maintenance (L70) Hours	60,000
Environment	Wet Location
IP Rating	IP65
Warranty	3 years

## Mounting Example



## Mounting Accessories



### LS-CABLE-XXX

XXX = 60 (60'), 110 (110'), 500 (500')

Note: 1/8" Galvanized cable includes 2 cable locks for use with loads up to 200lbs



### LS-LOCKX

X = 2 (2 locks), 4 (4 locks)

Cable lock for 1/8" cable  
Note: Includes (1) cable release key. Lock holds loads up to 200lbs



### LS-TT

Catenary Cable Tensioning Tool

Note: Up to 880lbs with minimal effort due to the 6:1 gear drive mechanism



### LS-UVZP-BK-XX

XX = 50 (50PCS), 30 (30PCS)

UV resistant, heavy duty ties  
Note: Maximum weight up to 100 lbs/tie

## Light Shade Accessories

Hat



### SHADE-HT-BK-XX-XX

XX = BK (black), CO\* (copper)  
XX = 8 (8.3"), 13\*\* (12.6")

Black top, black/copper bottom  
Weight: 0.46 lb (8), 1.2 lb (13)

Dish



### SHADE-DS-BK-BK-10

10.2"  
Black top, black bottom  
Weight: 0.76 lb

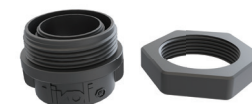
Flower



### SHADE-FL-BK-BK-XX

XX = 10 (9.8"), 13 (13.8")

Black top, black bottom  
Weight: 0.63 lb (10), 1.48 lb (13)



### SHADE-ADP-LSL2-XX-XX

XX = BK (Black), WH\* (White)

XX = 01 (1pc), 25 (25pcs), 50 (50pcs)  
Litesphere 2.0 Shade Adapter kit

\*Only available for 13 (Hat) \*\*Consult factory for lead time and MOQ

## Replacement Parts

\*Contact Factory for MOQ and lead time



**LSL-XX-S-12**  
**XX = 19, 27, 30, 35, 40, 50,**  
**AM, RD, RB, GR, YL**  
 12V Standard Brightness  
 Wedge Base LED  
 Sold each



**LSL-XX-H-12**  
**XX = 19, 27, 30, 35, 40, 50,**  
**AM, RD, RB, GR, YL**  
 12V High Output  
 Wedge Base LED  
 Sold each



**LSL-XX-V-12**  
**XX = 19, 27, 30, 35, 40, 50,**  
**AM, RD, RB, GR, YL, TS**  
 12V Very High Output  
 Wedge Base LED  
 Sold each



**LSL2-EC-X**  
**X = B (BLACK), W (WHITE)**  
 Litesphere 2.0 End-Cap  
 Sold each  
**LSL2-EC-X-PK20**  
 Litesphere 2.0 End-Cap  
 20pack

## Replacement Globes



**LST-CG**  
 Litesphere 2.0  
 Clear globe  
 sold each



**LST-OG**  
 Litesphere 2.0  
 Opal globe  
 sold each

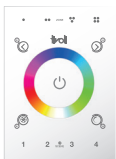


**LST-FG**  
 Litesphere 2.0  
 Frosted globe  
 sold each



**LST-XX**  
 Litesphere 2.0  
**XX = RG (red), OR (orange), YG**  
**(yellow), GG (green), BG (blue),**  
**PG (purple)**  
 sold each

## In-Wall Controls



**TVOQ-1-WH**  
 White  
 16 DMX channel, 16 scene,  
 4 zone, glass touch screen



**TVOQ-10-XX-7**  
**XX = BK (black), WH (white)**  
 1024 DMX channel, 500 scene,  
 10 zone, glass touch screen



**TVOQ-2-BK**  
 Black  
 512 DMX channel, 99 scene,



## Power Supplies

### INFINITY - MLV / ELV / 0-10V / PWM / TRIAC

Dim to 1% with a 0-10V Lutron Diva dimmer (by others)

DESCRIPTION	CAT NO	APPLICATION	PRIMARY VOLTAGE	SECONDARY VOLTAGE	CIRCUIT BREAKERS	MAX LOAD	MIN LOAD	CIRCUIT CAPACITY
Infinity Series Class 2 Transformer	INF-J-30-1-2.5-12	Indoor / Outdoor	100 - 277V AC	12V DC	1	30W	3W	2.5A
	INF-J-60-1-5-12				1	60W	6W	5A
	INF-J-180-3-5-12				3	3x60W	3x6W	3x5A
	INF-J-300-5-5-12				5	5x60W	5x6W	5x5A

### ADNM - NON DIMMING

DESCRIPTION	CAT NO	APPLICATION	PRIMARY VOLTAGE	SECONDARY VOLTAGE	CIRCUIT BREAKERS	MAX LOAD	CIRCUIT CAPACITY
ADNM Series Class 2 Transformer	ADNM-60-1-5-12-D	Indoor / Outdoor	100-277V AC 50/60 HZ	12V DC	1	60W	5A
	ADNM-80-1-5-12-D				1	60W	5A
	ADNM-150-2-5-12-D				2	2x60W	2x5A
	ADNM-240-3-5-12-D				3	3x60W	3x5A
	ADNM-320-4-5-12-D				4	4x60W	4x5A

### ADNM - 0-10V DIMMING

DESCRIPTION	CAT NO	APPLICATION	PRIMARY VOLTAGE	SECONDARY VOLTAGE	CIRCUIT BREAKERS	MAX LOAD	CIRCUIT CAPACITY
ADNM Series Class 2 Transformer	ADNM-60-1-5-12-DOT	Indoor / Outdoor	100-277V AC 50/60 HZ	12V DC	1	60W	5A
	ADNM-80-1-5-12-DOT				1	60W	5A
	ADNM-150-2-5-12-DOT				2	2x60W	2x5A
	ADNM-240-3-5-12-DOT				3	3x60W	3x5A
	ADNM-320-4-5-12-DOT				4	4x60W	4x5A

### ADNM - DMX SINGLE ADDRESS

DESCRIPTION	CAT NO	APPLICATION	PRIMARY VOLTAGE	SECONDARY VOLTAGE	CIRCUIT BREAKERS	MAX LOAD	CIRCUIT CAPACITY
ADNM Series Class 2 Transformer	ADNM-60-1-5-12-DIN	Indoor / Outdoor	100-277V AC 50/60 HZ	12V DC	1	60W	5A
	ADNM-80-1-5-12-DIN				1	60W	5A
	ADNM-150-2-5-12-DIN				2	2x60W	2x5A
	ADNM-240-3-5-12-DIN				3	3x60W	3x5A
	ADNM-320-4-5-12-DIN				4	4x60W	4x5A

### ADNM - DMX MULTI ADDRESS

DESCRIPTION	CAT NO	APPLICATION	PRIMARY VOLTAGE	SECONDARY VOLTAGE	CIRCUIT BREAKERS	MAX LOAD	CIRCUIT CAPACITY
ADNM Series Class 2 Transformer	ADNM-150-2-5-12-DIN-2	Indoor / Damp	100-277V AC 50/60 Hz	12V DC	2	2x60W	5A
	ADNM-240-3-5-12-din-3				3	3x60W	3x5A